

mades®



Workshop
Furniture

ECO-TOOL CABINETS LOW



Eco-Tool Cabinets Low



Economical cupboards for the workshop, warehouse and production. The range of accessories such as wheel base & writing desktop cover all the basic needs of professionals.

Drawers are %70 extendable, shelves are fixed.

Accessories



Ribbed rubber cover for Cabinet	
500 mm	152.66.10.502
1000 mm	152.66.10.503



Desktop for 500mm Cabinet	
	152.66.10.500



Wheeled Base for 500mm Cabinet	
	152.66.10.501



Conical Feet	
	152.66.10.504

ECO TOOL CABINET ONE DOOR

2 Shelves & 1 Drawer



Product code	152.66.10.100
Dimensions (mm)	500(L) x 500(W) x 1050(H)
	2 Shelves - 1 Drawer



ECO TOOL CABINET TWO DOOR

2 Shelves & 2 Drawers



Product code	152.66.10.102
Dimensions (mm)	1000(L) x 500(W) x 1050(H)
	2 Shelves - 2 Drawers

ECO TOOL CABINET TWO DOOR

4 Shelves & 2 Drawers



Product code	152.66.10.101
Dimensions (mm)	1000(L) x 500(W) x 1050(H)
	4 Shelves - 2 Drawers

TOOL CABINETS



Tool Cabinets

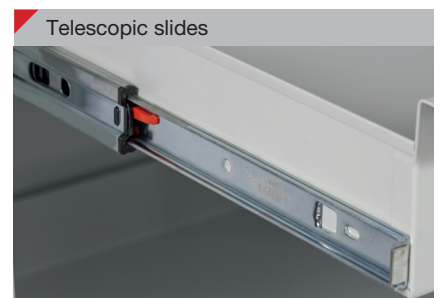
High quality cupboards for the workshop, warehouse and production with full-extension drawers and pull out shelves on telescopic rails. The range of accessories such as wheel base & writing desktop cover all the basic needs of professionals. Additional drawers and pull-out shelves can be added.



Standard Features



Galvanized fixed shelf



Telescopic slides

Accessories



Ribbed rubber cover for Cabinet	
500 mm	152.66.10.502
1000 mm	152.66.10.503



Desktop for 500mm Cabinet	
	152.66.10.500



Wheeled Base for 500mm Cabinet	
	152.66.10.501



Conical Feet	
	152.66.10.504

TOOL CABINET ONE DOOR

2 Shelves & 1 Drawers



Product code	152.66.11.100
Dimensions (mm)	500(L) x 500(W) x 1050(H)
	2 Shelves - 1 Drawer



TOOL CABINET TWO DOOR

4 Shelwes & 2 Drawers



Product code	152.66.11.102
Dimensions (mm)	1000(L) x 500(W) x 1050(H)
	4 Shelves - 2 Drawers

TOOL CABINET TWO DOOR

2 Shelwes & 2 Drawers



Product code	152.66.11.103
Dimensions (mm)	1000(L) x 500(W) x 1050(H)
	2 Shelves - 2 Drawers

TOOL CUPBOARDS HIGH



Tool Cupboards High

High quality, sturdy, welded construction cupboards for the workshop, warehouse and production with full-extension drawers and pull out shelves & fixed shelves options. Additional drawers and pull-out shelves can be added.



Standard Features



Galvanized fixed shelf



Telescopic slides

Accessories



4 swivel castors, 2 with brakes

Wheel Set for KD 152.66.10.505
--

TOOL CUPBOARD ONE DOOR

3 fixed & 3 extendable shelves

Product code	152.66.12.100
Dimensions (mm)	500(L) x 500(W) x 1950(H)

TOOL CUPBOARD TWO DOOR



4 fixed & 4 extendable shelves

Product code	152.66.12.102
Dimensions (mm)	1000(L) x 500(W) x 1950(H)

TOOL CUPBOARD TWO DOOR



3 fixed shelves & 2 drawers

Product code	152.66.12.101
Dimensions (mm)	1000(L) x 500(W) x 1950(H)

DRAWER CABINETS

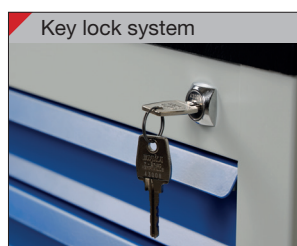
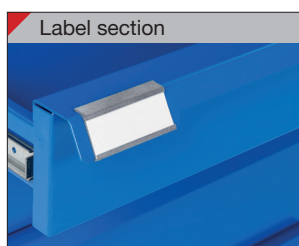


Drawer Cabinets

Top quality drawer cabinets with variety of sizes and drawer combinations. Full-extension drawer combinations 100, 150, 200 mm high mounted on telescopic rails. Cylinder lock with central locking. 600mm depth and 600 & 900mm wide.



Standard Features



DRAWER CABINET 5 DRAWERS



Product code	152.66.13.101
Dimensions (mm)	600(L) x 600(W) x 800(H)
Drawers	3x100mm 2x200mm

Product code	152.66.13.100
Dimensions (mm)	600(L) x 600(W) x 800(H)
Drawers	2x100mm 2x150mm 1x200mm

DRAWER CABINET 6 DRAWERS



Product code	152.66.13.105
Dimensions (mm)	600(L) x 600(W) x 1000(H)
Drawers	2x100mm 2x150mm 2x200mm

Product code	152.66.13.115
Dimensions (mm)	900(L) x 600(W) x 1000(H)
Drawers	2x100mm 2x150mm 2x200mm

DRAWER CABINET 5 DRAWERS



Product code	152.66.13.111
Dimensions (mm)	900(L) x 600(W) x 800(H)
Drawers	3x100mm 2x200mm

Product code	152.66.13.110
Dimensions (mm)	900(L) x 600(W) x 800(H)
Drawers	2x100mm 2x150mm 1x200mm

DRAWER CABINET 7 DRAWERS



Product code	152.66.13.106
Dimensions (mm)	600(L) x 600(W) x 1000(H)
Drawers	4x100mm 2x150mm 1x200mm

Product code	152.66.13.116
Dimensions (mm)	900(L) x 600(W) x 1000(H)
Drawers	4x100mm 2x150mm 1x200mm

TOOL TROLLEYS



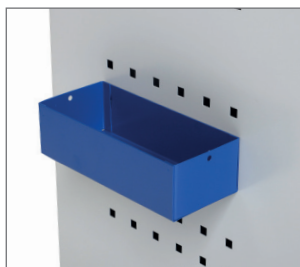
Tool Trolleys

Flexible provision of materials, small parts and tools, they are close to your hand. Mobile Tool Trolleys have a variety of sizes and colors & drawer combination.

Full-extension drawer combinations 75, 150, 225 mm high mounted on telescopic rails. Wheel fittings: 2 swivel castors, one with stop, 2 fixed castors.



Details



TOOL TROLLEYS 6 DRAWER



6 Drawers

Product code	152.66.14.101
Dimensions (mm)	630(L) x 410(W) x 930(H)
Drawers	3x75mm 3x150mm

MULTI-PURPOSE TROLLEY

ASSEMBLY TROLLEY 6 DRAWER



3 Shelves

Product code	152.66.14.105
Dimensions (mm)	900(L) x 500(W) x 915(H)

2 Shelves

Product code	152.66.14.104
Dimensions (mm)	900(L) x 500(W) x 915(H)



6 Drawers

Product code	152.66.14.103
Dimensions (mm)	930(L) x 410(W) x 930(H)
Drawers	3x75mm 3x150mm

TOOL TROLLEYS 5 DRAWER



5 Drawers

Product code	152.66.14.100
Dimensions (mm)	630(L) x 410(W) x 930(H)
Drawers	3x75mm 2x225mm

TOOL TROLLEYS 7 DRAWER



7 Drawers

Product code	152.66.14.102
Dimensions (mm)	630(L) x 410(W) x 930(H)
Drawers	5x75mm 2x150mm

WALL MOUNTED CUPBOARDS



Wall-mounted cupboards for the workshop provides you additional storage space when the floor space is limited. They can be used as a stand-alone unit as well.

WALL MOUNTED CUPBOARD

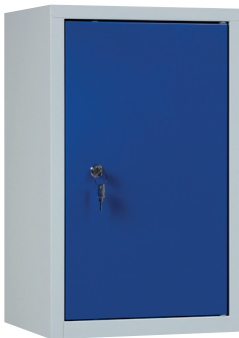
2 Door



Product code	152.66.19.101
Dimensions (mm)	800(L) x 300(W) x 600(H)

WALL MOUNTED CUPBOARD

1 Door

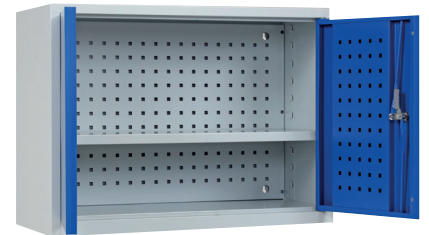


Product code	152.66.19.100
Dimensions (mm)	350(L) x 300(W) x 600(H)

WALL MOUNTED CUPBOARD

2 Door

Doors & rear wall with perforated panels



Product code	152.66.19.102
Dimensions (mm)	800(L) x 300(W) x 600(H)

UNIVERSAL CUPBOARDS



Universal Cupboards

Multi-purpose cupboards for workshop and office for material and clothing combination storages.



Details



UNIVERSAL CUPBOARD



Product code	152.66.17.102
Dimensions (mm)	920(L) x 420(W) x 1950(H)

UNIVERSAL CUPBOARD



Product code	152.66.17.100
Dimensions (mm)	920(L) x 420(W) x 1950(H)

UNIVERSAL CUPBOARD



Product code	152.66.17.104
Dimensions (mm)	1200(L) x 420(W) x 1950(H)

KD UNIVERSAL CUPBOARD



Product code	152.66.17.103
Dimensions (mm)	920(L) x 420(W) x 1950(H)

Product code	152.66.17.101
Dimensions (mm)	920(L) x 420(W) x 1950(H)

HEAVY-DUTY TOOL CUPBOARDS



Heavy-Duty Tool Cupboards

Heavy-Duty Cupboards suitable for storing very heavy and large format parts safely and conveniently. With perforations for tool holders and bins. Can be retrofitted with additional shelves, drawers and worktop. Inside of the doors and rear wall with perforations



Detail



HEAVY-DUTY TOOL CUPBOARD

Tool Cupboard with Perforations on the Door



3 Shelf - 1 Worktop

Product code	152.66.16.100
Dimensions (mm)	1000(L) x 600(W) x 1950(H)

HEAVY-DUTY TOOL CUPBOARD

Tool Cupboard with Perforations on the Door



3 shelves

Product code	152.66.16.101
Dimensions (mm)	1000(L) x 600(W) x 1950(H)

HEAVY-DUTY TOOL CUPBOARD

Tool Cupboard with Perforations on the Door & Rear



1 Shelf - 1 Worktop

Product code	152.66.16.102
Dimensions (mm)	1000(L) x 600(W) x 1950(H)

HEAVY-DUTY TOOL CUPBOARD

Tool Cupboard with Perforations on the Door & Rear



2 shelves

Product code	152.66.16.103
Dimensions (mm)	1000(L) x 600(W) x 1950(H)

MOBILE CABINETS



Mobile Cabinets

Flexible provision of materials and tools, they are close to your hand. Mobile Cabinets has a variety of sizes and colors & 100kg capacity per castors; 2 swivel with wheel stops and 2 fixed castors



Detail



MOBILE TROLLEY

1 Shelf



Product code	152.66.15.100
Dimensions (mm)	600(L) x 610(W) x 940(H)



MOBILE TROLLEY

2 Shelves



Product code	152.66.15.101
Dimensions (mm)	1120(L) x 610(W) x 940(H)

MOBILE TROLLEY

4 Shelves



Product code	152.66.15.102
Dimensions (mm)	1120(L) x 610(W) x 1240(H)

ENVIROMENTAL CUPBOARDS



Enviromental Cupboards

Environmental Cupboards for safe indoor storage of water hazardous liquids in small containers. Lockable doors with perforations for effective ventilation



4 Shelves

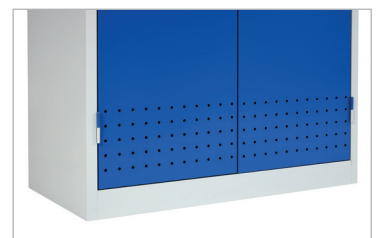
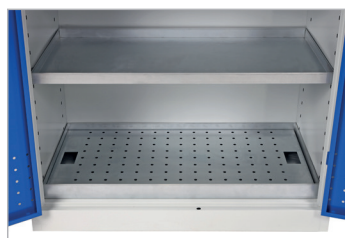
Product code	152.66.20.100
Dimensions (mm)	950(L) x 500(W) x 1800(H)



2 Shelves

Product code	152.66.20.101
Dimensions (mm)	950(L) x 500(W) x 900(H)

Detail



COMPUTER WORKSTATION



Computer Workstation

IP 20 protection type multi-functional Computer Workstations for the workshop, warehouse, production facilities. Lockable base cupboard with storage space for computer, printer and accessories

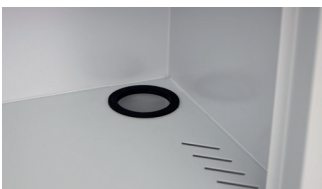


Product code	152.66.21.100
Dimensions (mm)	650(L) x 520(W) x 1770(H)



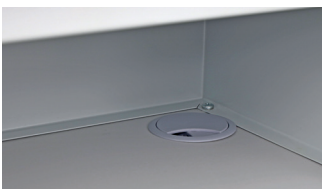
Product code	152.66.21.101
Dimensions (mm)	650(L) x 520(W) x 1060(H)

Detail



4 swivel castors, 2 with brakes

Wheel Set
152.66.21.500



WORKSTATION SYSTEM

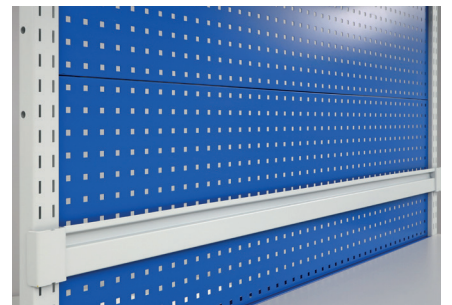


Workstation System

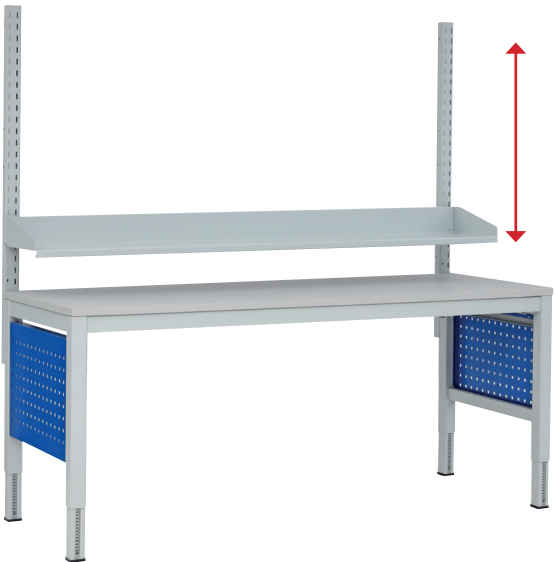
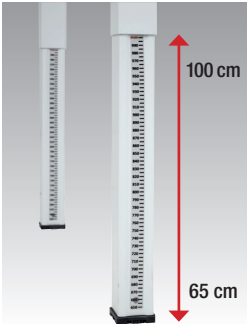
Height adjustable Workstation System is a cost-effective, standard workbench. It is suitable for most industrial environments. The range of accessories such as storage bin rails, perforated panel, drawers and additional shelves cover all the basic needs of professionals.



Detail



WORKSTATION SYSTEM



WORKSTATION SYSTEM

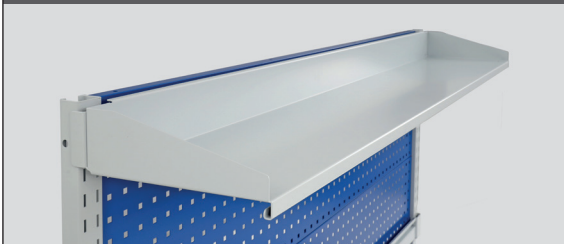


Standart Table



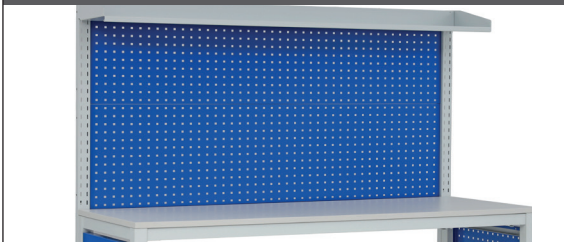
	Dimensions	Product Code
Standart Table	1200 x 660	152.66.51.100
Standart Table	1400 x 660	152.66.51.101
Standart Table	1600 x 660	152.66.51.102
Standart Table	1800 x 660	152.66.51.103
Standart Table	1200 x 800	152.66.51.120
Standart Table	1400 x 800	152.66.51.121
Standart Table	1600 x 800	152.66.51.122
Standart Table	1800 x 800	152.66.51.123

Metal Shelf

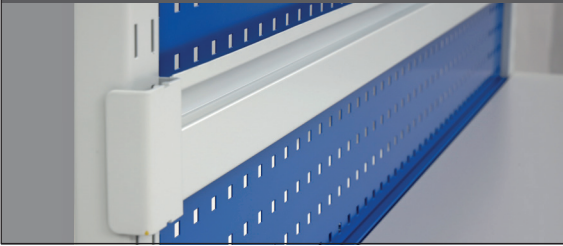


	Dimensions	Product Code
Metal Shelf	1200	152.66.51.110
Metal Shelf	1400	152.66.51.111
Metal Shelf	1600	152.66.51.112
Metal Shelf	1800	152.66.51.113

Perforated Panel



	Dimensions	Product Code
Perforated Panel	1200	152.66.51.500
Perforated Panel	1400	152.66.51.501
Perforated Panel	1600	152.66.51.502
Perforated Panel	1800	152.66.51.503

Suspension Head for Bins


	Dimensions	Product Code
Suspension Head for Bins	1200	152.66.51.510
Suspension Head for Bins	1400	152.66.51.511
Suspension Head for Bins	1600	152.66.51.512
Suspension Head for Bins	1800	152.66.51.513

Bottom Shelf


	Dimensions	Product Code
Bottom Shelf	1200	152.66.51.610
Bottom Shelf	1400	152.66.51.611
Bottom Shelf	1600	152.66.51.612
Bottom Shelf	1800	152.66.51.613
Pole Set		152.66.51.525

Suspension & Mobile Cabinet


	Dimensions	Product Code
Suspension	Single Drawer	152.66.51.200
Suspension	Two Drawer	152.66.51.201
Suspension	Three Drawer	152.66.51.202
Suspension	Four Drawer	152.66.51.203
Mobile Cabinet	Three Drawer	152.66.51.204
Mobile Cabinet	Four Drawer	152.66.51.205

	Product Code
Swivel arm for flat panel display	152.66.51.520

MOBILE CABINET 180° OPENING



Mobile Cabinets 180° Opening

Flexible provision of materials and tools, they are close to your hand. Mobile Cabinets has a variety of glass & steel door with a unique specification of 180° opening doors. 25kg loading capacity per shelf ; 2 swivel with wheel stops and 2 fixed castors



Glass Door

Product code	152.66.15.201
Dimensions (mm)	520(L) x 500(W) x 1165(H)

Steel Door

Product code	152.66.20.100
Dimensions (mm)	520(L) x 500(W) x 1165(H)

Detail



MOBILE STOOL





Product code	152.66.21.100
Dimensions (mm)	375(L) x 600(W) x 450(H)



Product code	152.66.21.101
Dimensions (mm)	360(L) x 360(W) x 470(H)

mades®



www.mades.com.tr